

Overture to "Pulcheria" (K 304)

(for Brass, Organ & Timpani)

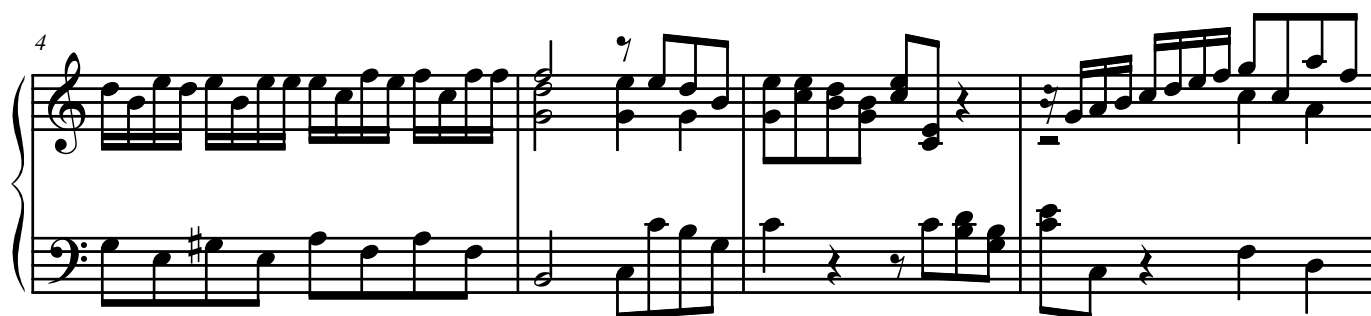
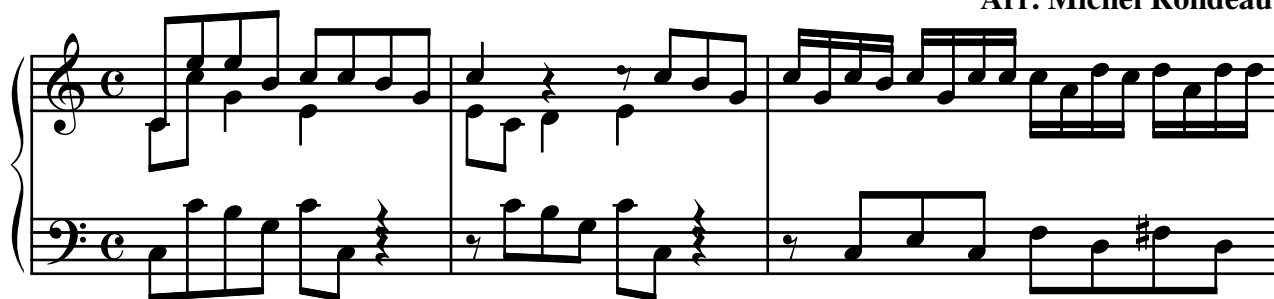
Organ

I

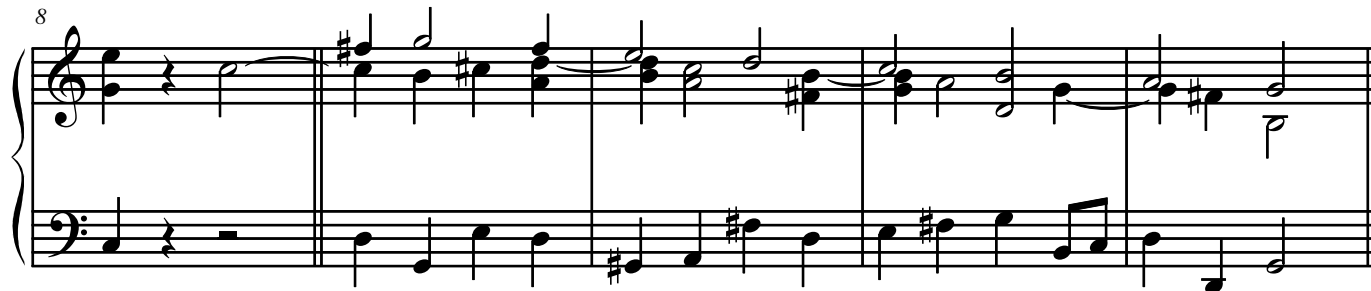
Allegro (♩ = circa 90)

Johann Joseph Fux (1660-1741)

Arr. Michel Rondeau



Adagio (♩ = circa 60)



Allegro (♩ = circa 90)



Overture to "Pulcheria" (K 304) Organ

2

16

Measures 16-18 of the Overture to "Pulcheria". Measure 16 begins with a treble clef, a key signature of one sharp (F#), and a common time signature. The right hand plays a series of eighth notes, while the left hand plays a bass line with a few rests. Measure 17 continues the eighth-note pattern in the right hand. Measure 18 features a more complex right-hand pattern with sixteenth notes and a sharp sign in the bass line.

19

Measures 19-21 of the Overture to "Pulcheria". Measure 19 shows a change in the right-hand pattern to a series of chords. Measure 20 continues with chords in the right hand and a more active bass line. Measure 21 features a rapid sixteenth-note run in the right hand.

22

Measures 22-24 of the Overture to "Pulcheria". Measure 22 continues the sixteenth-note run in the right hand. Measure 23 features a series of chords in the right hand. Measure 24 shows a return to a more active right-hand pattern with sixteenth notes.

25

Measures 25-27 of the Overture to "Pulcheria". Measure 25 continues the sixteenth-note run in the right hand. Measure 26 features a series of chords in the right hand. Measure 27 concludes the section with a final chord in the right hand and a half note in the bass line.